



BHC Meeting

February 8, 2024, 3pm

Jefferson County's Behavioral Health Consortium (BHC) is supported by funding from HRSA's RCORP-Implementation Grant through August 2024 and Jefferson County Opioid Abatement Council funding through 2038



Agenda – 02/08/24 BHC Meeting

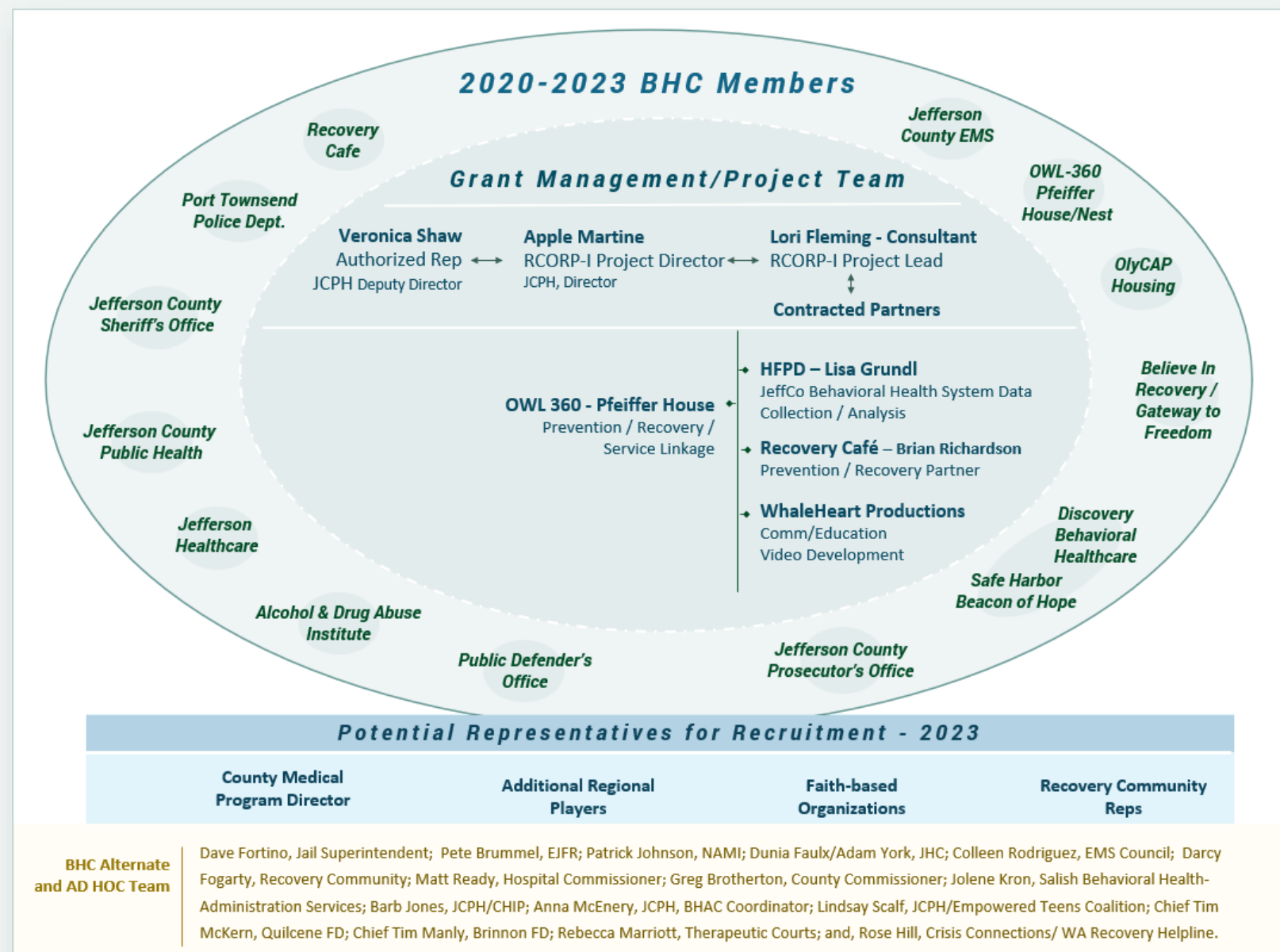
- **Introductions & Updates** – 15 Minutes
- **BHC Initiative: Community Conversations to Explore Stigma** – 30 Minutes
- **BHC Updates** - 30 Minutes
 - Therapeutic Drug Court Initiative
 - Dr. Berry's Fentanyl Opioid Response Update to Board of Health
 - Opportunities for Intervention
 - Opioid Abatement Council Funding & BHC's Next Steps
 - RHNDP-P Grant Submittal Grows out of Data Workgroup's Discussions
 - Harm Reduction Updates - Naloxone Boxes, JCPH Mobile Services Van, Community Education/Engagement, RiVive, SCHR Table, Yellow Card, and the BH Summit's Provider List
 - Meetings Attended – Links to various BHC-relevant Meeting Notes
- **Next BHC Meeting – May 9th @ 3:00 on Zoom**





BHC Overview

BHC



The BHC is focused on collaboratively developing and funding a collective seamless behavioral health system that allows our community members to navigate smoothly to needed services.

We have grown from 4 voting members in 2018, to 14 voting members in 2024.

The BHC and its work is supported by funding from HRSA’s RCORP-Implementation Grant through August 2024 and Jefferson County’s Opioid Abatement Council funding that continues through 2038.





BHC Initiative: Host Community Conversations to Explore Stigma

Event Dates:

June 10-14, 2024



Facilitator:

Tedra Cobb, through the HRSA-funded UR Medicine Recovery Center of Excellence

Purpose:

To engage the BHC and the wider community in critical conversations and training to address SUD stigma.

Links:

[Campaign to Reduce Stigma - Overview](#)

[Recovery of Excellence – Stigma Webpage](#)

[BHC Community Conversations Webpage](#)

Initiative's Goals for Jefferson County

Cultivate Empathy

Leverage the power of art to foster a personal connection with those impacted by the opioid crisis, humanizing their experiences and struggles.

Reframe the Conversation

Through conversation and sharing our experiences, we learn that there are different paths to addiction and in recovery. Our hope is to open doors to support people on their paths to recovery.

Strengthen Community Ties

Encourage the development of meaningful relationships among participants, laying the groundwork for ongoing collaboration and support in combating stigma.





BHC Initiative: Host Community Conversations on Stigma

Event Dates:

June 10-14, 2024



Facilitator:

Tedra Cobb, through the HRSA-funded UR Medicine Recovery Center of Excellence

Purpose:

To engage the BHC and the wider community in critical conversations and training to address SUD stigma.

Links:

[Campaign to Reduce Stigma - Overview](#)

[Recovery of Excellence – Stigma Webpage](#)

[BHC Community Conversations Webpage](#)

Engage Through Workshops

Community Conversations

2.5-hour interactive sessions using multimedia to foster open dialogue about SUD, its stigma, and community support systems.

Train-the-Trainer Event

A 3-hour workshop on June 14th for those committed to continuing these conversations in their communities. Participants will join the BHC's Facilitator Leadership Group for ongoing support





BHC Initiative: Host Community Conversations on Stigma

Event Dates:

June 10-14, 2024



Facilitator:

Tedra Cobb, through the HRSA-funded UR Medicine Recovery Center of Excellence

Purpose:

To engage the BHC and the wider community in critical conversations and training to address SUD stigma.

Links:

[Campaign to Reduce Stigma - Overview](#)

[Recovery of Excellence – Stigma Webpage](#)

[BHC Community Conversations Webpage](#)

BHC's Role and Invitation

Role

We appreciate your engagement through the participation, support, and promotion of these sessions within your networks.

Invitation

We invite you to use this opportunity to lead by example, enhancing our community's capacity to address behavioral health challenges with empathy and action.

**Together, we can create a more informed,
compassionate community that is set up
to support recovery and break down barriers of stigma.**





Update: Therapeutic Drug Court Initiative

Judge Brandon Mack

and the Therapeutic Drug Court Team are working on an initiative to develop a Court approach that focuses on consistent practices while allowing tailored approaches to meet the individual needs of participants.

Initiative's Focus Areas

Team Meetings and discussions, led by Therapeutic Courts Coordinator Rebecca Marriott, are focused on enforcement policies, court appearance schedules, and a potential phased system. Plans are also being made to attend national conferences for broader insights and evidence-based practices.

How Can BHC Members Engage, Lead, and Support?

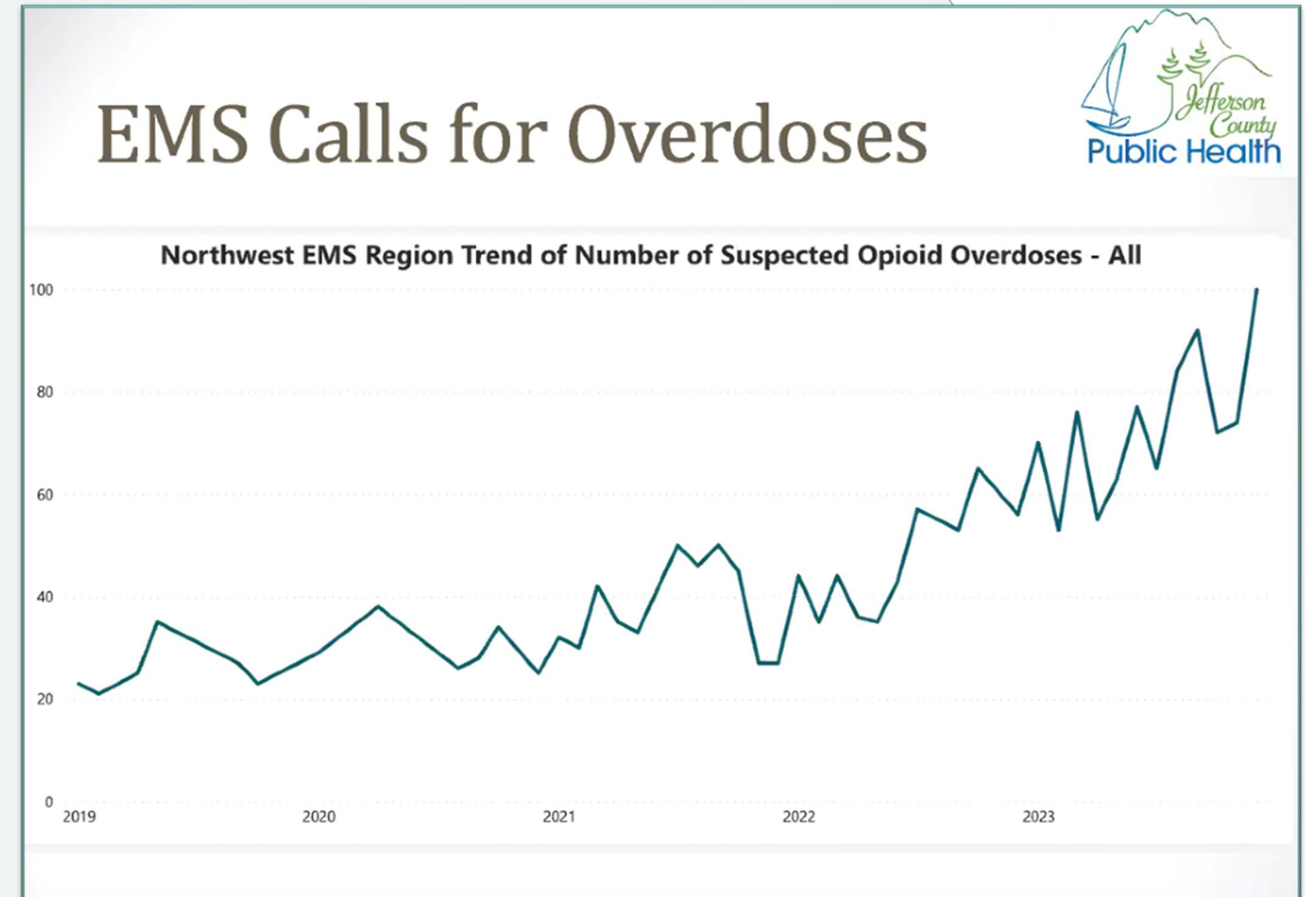
Judge Mack and the Drug Court Team have extended an invitation for community and stakeholder input. We invite you to [email Rebecca Marriott](#) with your constructive input.





Dr. Berry's Fentanyl / Opioid Response Update to 1/18/24 BoH

- Significant rise in opioid and fentanyl overdoses in Jefferson County, particularly affecting those aged 40-60.
- Fentanyl commonly used in conjunction with stimulants, and for pain or withdrawal symptoms, highlighting healthcare access issues.
- Innovative EMS response includes on-the-spot buprenorphine dosing to prevent repeat overdoses.
- Discussions explored the Blake decision's impact and compared public health strategies for different crises.
- Action items emphasize novel interventions and improved treatment access to tackle the opioid crisis and reduce stigma.



Links:

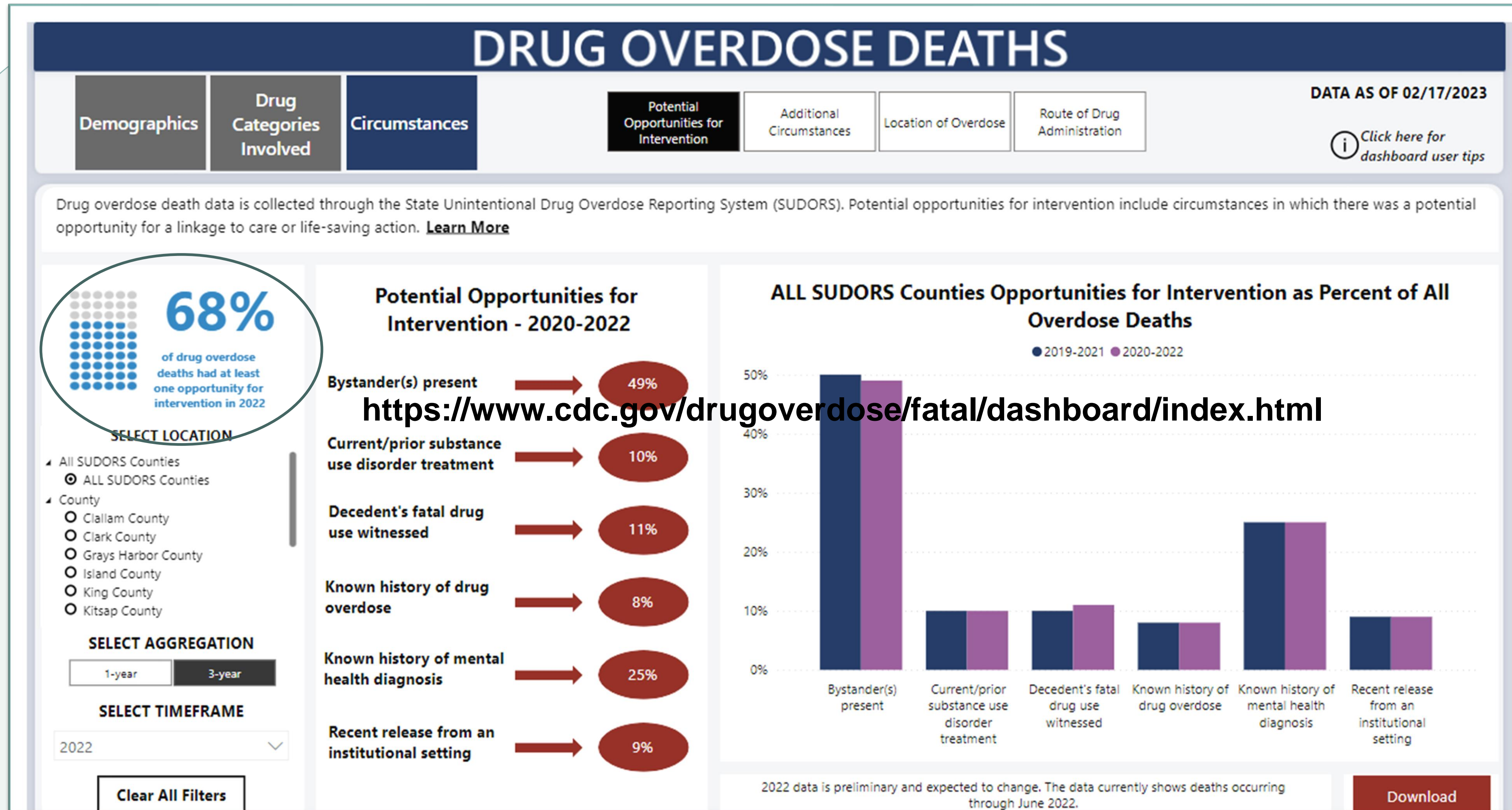
[Jan. 18, 2024 – Full Board of Health Meeting Video](#)

[Notes: Dr. Berry's Fentanyl /Opioid Response Update](#)





Opportunities for Intervention



[Click to enlarge for WA State](#)
[Visit CDC Drug Overdose Dashboard](#)





Updates: OAC Funding & Next Steps

Build Organizational Infrastructure

- **Conduct Strategic Planning** to inform 2024 actions
- **Establish and Formalize BHC Phase 2** with MOU that includes governance, bylaws, meeting attendance requirements, and any relevant Data Sharing Agreements
- **Review BHC Members and Recruit** where needed
- **Develop and institute an MOU that structures the BHC/BHAC linkages**
- **Build website**

Advance BHC Initiatives

- **Provide leadership, planning, and coordination** for Jefferson County’s prevention, treatment and recovery response to the opioid challenge
- **Pursue funding** to identify and plan interventions that advance the enhancement of patient care coordination across the care continuum: from pre-hospital care to post-acute discharge. (RHNDP-P App submitted 1/2024)
- **Execute Community Conversations** effort throughout Jefferson County

Payment Year	Distributor	
2022	\$70,766.72	✓
2023	\$36,262.38	✓
2024	\$45,387.50	
2025	\$45,387.50	
2026	\$45,387.50	
2027	\$45,387.50	
2028	\$60,295.72	
2029	\$62,801.38	
2030	\$62,801.38	
2031	\$52,790.90	
2032	\$52,790.90	
2033	\$52,790.90	
2034	\$52,790.90	
2035	\$52,790.90	
2036	\$52,790.90	
2037	\$52,790.90	
2038	\$52,790.90	
Totals:	\$896,804.78	

\$96,326.19 was transmitted to DBH for “2022-2023 Opioid Settlement”. This funding will support BHC Administration and Initiatives through 9/2024.





Jefferson County Patient Care Continuum Consortium (JCPCCC)

RHNDP-P Grant Funding Application Submitted January 2024

Proposed Outputs

- CHA Report focused on NTP's, MVPs, and D2Ds
- Interventions Report
- Strategic and Sustainability Plans

Proposed Outcomes

- Streamlined patient throughput and reduced unnecessary hospital visits
- Improved coordination and access for targeted patient groups
- Strategic framework for long-term improvements in rural healthcare.



Submitted by Jefferson Healthcare, on behalf of the Jefferson County Patient Care Continuum Consortium (JCPCCC), including Jefferson Healthcare, Discovery Behavioral Health Care, East County Medical Council, and Jefferson County Public Health.

This funding proposal aims to support the JCPCCC to create Strategic and Sustainability Plans focused on improving patient care coordination through data-based decision-making.

The planning effort proposed targets three specific groups:

- pre-hospital, non-transport patients,
- frequent emergency room visitors, and
- patients facing discharge challenges

Performance Period

July 2024 - June 2025

Budget

Personnel

\$64,238 for project direction and facilitation.

Travel, Supplies, and Other

\$5,000 for necessary operational expenses.

Contractual Services

\$26,000 for expert advisory, data analysis, and legal compliance.

Indirect Costs \$4,761.90

Total: \$99,999.90.





Update: Naloxone Box Installation – Other Locations?

The first 11 public access naloxone boxes are/will be placed:

1. Outside Believe In Recovery Offices
2. Recovery Café (up outside 24-hour access)
3. Port Townsend Library (inside by AED at checkout desk)
4. Port Hadlock Library
(Installed inside, at back of the library by the DVDs/Media, access during library open hours)
5. Quilcene Fire Station (up outside the front door 24-hour access)
6. Brinnon Fire Station (up outside the front door 24-hour access)
7. Quilcene community center (should be up any day)
8. Brinnon community center (should be up any day)
9. Tri Area community center (should be up any day)
10. Haines St. park and ride, transit station in PT. (Not up yet. Date TBD)
11. Four Corners transit station in Pt. Hadlock. (Not up yet. Date TBD)

Help us identify where additional boxes could be installed!

Ideas: DSHS, Water Street public restrooms, fairgrounds, boatyard, skatepark, Mountain View building





Update: JCPH's Harm Reduction Program

Jefferson County Public Health Harm Reduction / Syringe Exchange Program

Anonymous and confidential walk-in syringe exchange services.

615 Sheridan Street in Port Townsend

Services include:

Free sterile syringes in exchange for used syringes, secondary exchange, safer injecting supplies, glass pipes, naloxone, hygiene supplies, and healthcare referrals. Human immunodeficiency virus (HIV) and hepatitis testing is available by appointment.

Walk-in Hours:

M 2-4p, W 11a-1p, F 2-4p

New Mobile Service Coming to South County

- JCPH harm reduction services plans to expanding mobile presence to Port Hadlock, Quilcene, and Brinnon.
- Possible rotating mobile schedule in Port Hadlock and Brinnon, and planning weekly presence in Quilcene at the JCPH clinic space

Ways BHC Members Can Engage?

Help spread the word about our expanding services, brainstorm service locations and suggest/collaborate on outreach events as we set them up.

Naloxone Trainings

Given: Brinnon Community Center Senior Leadership Meeting, Quilcene Community Center, The Nest, Jefferson Teen Center, Olympic Educational Service District, Port Townsend School District, Quilcene School Board, OlyCap, Dove House, Jefferson County Library, Port Townsend Library, The Port of Port Townsend, Centrum, Jefferson County Courts, Jefferson County Board of Health, WA Department of Health, Port Townsend Farmers Market, Thing Music Festival, Med Takeback,

Scheduled: Tri Area Community Center 2/22 3pm, Port Townsend Library 4/18 5pm





Update: JCPH to use RiVive in Naloxone Packets

Why the Change?

DOH, who supplies JCPH with naloxone is switching to RiVive because it is available at a lower price point.

How is RiVive different from Naloxone?

RiVive is a lower dose naloxone spray than Narcan, but still effective at reversing an opioid overdose. RiVive is 3mg where the generic naloxone we currently get from DOH and Narcan are 4mg

Research Says?

Research has found that often times the increased amount of naloxone administered exceeded what was actually needed to reverse an opioid overdose. More research has emerged that knowledge of and access to naloxone were stronger factors in overdose survival than the amount of naloxone a person received during an opioid overdose emergency. Higher doses of naloxone increase the risk of precipitate or acute withdrawal in people who have overdoses. While not deadly, the rapid onset of withdrawal symptoms can include vomiting, diarrhea, sweating, nausea, and muscle aches, with some suggesting that fear of these effects may discourage some from administering naloxone at all.

The screenshot shows the RiVive website with a dark blue background and a hexagonal pattern. At the top left is the Harm Reduction Therapeutics logo. The main heading is "RiVive™ is FDA Approved". Below this is a central box titled "5 Key Steps In Case of an Overdose" with "ENGLISH" and "SPANISH" buttons. To the right is an image of the RiVive product box and a hand holding the spray. Text on the page includes: "FDA has approved over-the-counter RiVive™ (naloxone HCl nasal spray 3 mg) for the emergency treatment of opioid overdose." and "This critical milestone advances the pursuit of HRT's mission to prevent opioid overdose deaths by making free of charge or low-cost over-the-counter naloxone available to everyone across the United States." A disclaimer at the bottom right states: "No company, entity, or individual will profit from sales of RiVive™."

[Learn more about RiVive](#)





Update: Yellow Card – New Print Run

CRISIS – 911	
SUICIDE & CRISIS Lifeline –988	
NAT'L SUICIDE PREVENTION LIFELINE	988 Call Chat Text
SALISH REGIONAL CRISIS LINE	888-910-0416
TRANS LIFELINE	877-565-8860
LGBTQ SUICIDE HOTLINE	866-488-7386 Text: 678678
VETERANS CRISIS LINE	888-777-4443
NATIVE AND STRONG LIFELINE	866-491-1683
NEVER USE ALONE HOTLINE	800-484-3731 NeverUseAlone.com
DOVE HOUSE DV/SA	360-385-5291
WA RECOVERY HELPLINE	866-789-1511
PORT TOWNSEND POLICE	360-385-2322
JEFFERSON COUNTY SHERIFF	360-385-3831
JEFFERSON HEALTHCARE ER	360-385-2200x4221
CHILD PROTECTIVE SERVICES	866-363-4276
ADULT PROTECTIVE SERVICES	877-734-6277
DEPT HEALTH & SOCIAL SVCS	877-501-2233
HOUSING	
BAYSIDE	360-385-4637
COAST SHELTER	360-796-0420
OLYCAP	360-385-2571
OLYMPIC NEIGHBORS	360-344-2190
PENINSULA HOUSING	360-379-2565
NAT'L HOMELESS VETERANS	877-424-3838
TRANSPORTATION	
DUNGENESS BUS LINES	360-417-0700
ECHHO	360-379-3246
JEFF TRANSIT/DIAL-A-RIDE	360-385-4777
PARATRANSIT SERVICES	360-377-7007 800-756-5438
PENINSULA TAXI	360-385-1872
MENTAL HEALTH	
DISCOVERY BEHAVIORAL HEALTHCARE	360-385-0321
NAMI JEFF CO	360-385-1716

SUBSTANCE USE	
AA HOTLINE	360-385-0266
BELIEVE IN RECOVERY	360-385-1258
NARCOTICS ANONYMOUS	360-215-2616
HARM REDUCTION/SYRINGE EXCH	360-390-8405 615 Sheridan St, PT Mon 2pm-4pm / Wed 11am-1pm / Fri 2pm-4pm
REAL PROGRAM	360-302-6730
RECOVERY CAFE JEFF CO	360-385-5292
DBH SUD SERVICES	360-385-3866
OLYMPIC PENINSULA HEALTH (MAT)	360-912-5777
FOOD	
BRINNON FOOD BANK	360-701-0483 151 Corey Street, Brinnon / Tues 10am – 1pm
PT FOOD BANK	1925 Blaine St, PT Sat 11:30am – 2pm (65+) / Wed 10am – 3pm
TRI-AREA FOOD BANK	360-385-9462 760 Chimacum Rd, Hadlock / Wed 10am – 1pm
QUILCENE FOOD BANK	360-765-0904 294952 Hwy 101, Quilcene / Wed 11am – 2pm
JUST SOUP	Tues 11:30am – 1:30pm St Paul's Episcopal, 1020 Jefferson St, PT
LITTLE FREE PANTRY	1045 10th St, PT
RECOVERY CAFÉ HOT MEALS	360-385-5292 939 Kearney St, PT / Tues-Fri 12-2pm
OLYCAP FOOD TRUCK	Thursdays Mill Road 10-12p / Rhody Drive 1-3p
PHYSICAL HEALTH	
Jeff Co Public Health Clinic	360-385-9400 Text 360-774-0187 615 Sheridan St, PT M-F 9a-4:30p
FINANCIAL ASSIST	
ST VINCENT DE PAUL	360-379-1325
LEGAL	
JEFF ASSOC COUNSEL	360-385-5613
JEFF CO IMMIGRANT RIGHTS	844-724-3737
JEFF CO IMMIGRANT RIGHTS ADVOCATES (JCIRA)	Spanish/English Text or Call 360-232-6070
NW JUSTICE PROJECT	888-201-1014 M-F / 9:15am – 12:15pm
UPDATED FEBRUARY 2024	

We'll have a stock of 1,000 Yellow Cards by mid-February.

Please email Lori with the quantity you need to distribute through your channels, and Lori/Anya will arrange delivery.





Update: Recruiting Business and Community Leaders to SCHR

BHC

Strengthen Jefferson County : A Call to Business and Community Leaders

Join Our Collaborative Effort for Community Well-being

The South County Harm Reduction (SCHR) Table, facilitated by the Jefferson County Behavioral Health Consortium (BHC), is a table of diverse stakeholders—spanning health institutions, mental health services, local hospitals, therapeutic courts, substance use counseling, emergency services, and law enforcement—united with a singular mission: to enhance the health and safety of our communities.

For three years, relevant BHC Members have been meeting monthly with key figures from South County, including school superintendents from Brinnon and Quilcene, EMS representatives, and the Sheriff. Our aim? To forge a safer, healthier future for our communities through dedicated efforts in harm reduction.

What is Harm Reduction?

Harm reduction (HR) is the SCHR table's guiding principle. We are implementing strategies to minimize health and social risks, embracing a range of safe practices from wearing seat belts and bike helmets to broader public health initiatives like ensuring Naloxone, a life-saving medication that can reverse opioid overdose, is available throughout South County. Harm reduction is about saving lives, curbing the spread of illness, and supporting those in need.

Partnership for Progress

Our achievements are a testament to what we can accomplish together:

- **Empowered Teens Coalition** In collaboration with Jefferson County Public Health (JCPH), we've fostered strong partnerships with local schools, nurturing a generation that's informed, resilient, and empowered.

The South County Harm Reduction Table has drafted a recruitment flyer content which will be finalized in the coming weeks.

Send your edits/insights on [this draft](#) to Lori.

[1/23/2024 SCHR Mtg Notes](#)





Update: BH Summit's Provider Crisis Resource List

Behavioral Health Crisis: [Salish Regional Crisis Line 1-888-910-0416](tel:18889100416)

Discovery Behavioral Healthcare DCR & MCOT

Programs below are not crisis programs.

Outreach Team Name	Days Available	Hours	Primary Referral Source	Phone
DBH REAL Team	M-Sun	24h / day	Any	360-302-6730
JCPH Syringe Exchange Program	M, W, F	M 2-4p, W 11a-1p, F 2-4	Any	615 Sheridan St
JCPH School Based Health	M-F	9-5	Any	380-390-8560 Call or text
Sheriff's Office Navigator	M-F	8-5	LE, EMS	JeffCom Non-emergency: 380-344-9779
EJFR CARES	M-Fri	8-4	EMS, LE	FireCARES@ejfr.org If urgent: JeffCom Non-emergency: 360-344-9779
Quilcene Fire CARES	M-Sun	24h / day	EMS	360-531-1495
JCPH Clinics	See below		Any	
JHC Clinics	See below		Any	

Behavioral Health Care

Physical Health Care

Discovery Behavioral Healthcare R.E.A.L Program

Our Mission: To improve the lives of the people we serve through Recovery, Empowerment, Advocacy, and Linkage, while promoting dignity, health, and self-sufficiency.

The R.E.A.L. Program provides community-based support to individuals in need and is:

- Is driven by harm reduction, trauma-informed, culturally inclusive principles.
- Is staffed by individuals with lived experience.
- Is voluntary.
- Is participant-driven, meeting people where they are.
- Is not time limited.
- Does not discriminate based on use status.

Priority Populations: Individuals with substance use or co-occurring needs, frequent contact with law enforcement or first responders, or who have had challenges accessing services under traditional service model.

How to Reach Us: 24 hours a day, 365 days a year: 360-302-6730. If no answer, leave a message.

Jefferson County Public Health Harm Reduction/Syringe Exchange Program

Anonymous and confidential walk-in syringe exchange services.

Jefferson County Public Health clinic at 615 Sheridan Street in Port Townsend

Services include free sterile syringes in exchange for used syringes, secondary exchange, safer injecting supplies, glass pipes, naloxone, hygiene supplies, and healthcare referrals. Human immunodeficiency virus (HIV) and hepatitis testing is available by appointment.

Walk-in Hours: M 2-4p, W 11a-1p, F 2-4p

Jefferson County Public Health Community Clinics

Services include annual exams & preventative health, birth control and family planning, STI testing & treatment, and sports physicals.

Port Townsend Clinic

615 Sheridan Street, Port Townsend
M 1p-4p, W 9a-4p, F 9a-4p
360-385-9400

Quilcene Clinic

294843 US-101, Quilcene (Medical Building behind Post Office on Rogers Street)
W 11a-12p, expanded W hours in summer
360-385-9400

Jefferson County Public Health School Based Health Centers

Jefferson County Public Health operates three School Based Health Centers (SBHC) in partnership with Jefferson Healthcare and the School Districts. SBHCs are clinics on the school campuses at Port Townsend High School (since 2008), Chimacum Jr/Sr High School (since 2008) and Quilcene School (since 2021). Comprehensive medical and mental health services are provided by licensed health care providers in confidential setting during school hours.

SBHCs provide access to health services to increase health equity and to reduce health-related barriers to academic and social success.

How to Reach Us: Call or Text: 360-390-8560 or call 360-385-9400 (messages are monitored M-F 9am-5pm)

Next steps content-gathering from LEADS/BIR/Outreach, then will print/distribute to providers.



BHC-Relevant Meetings from 11/09 – 2/7/2024

- 11/09 – BHC Meeting ([Packet](#), [Video](#), [Notes](#))
- 11/13 – OCH Board Meeting ([Packet & Minutes](#))
- 11/14 – State SSP Chat
- 11/14 – BHAC Meeting
- 11/17 – SCHR Meeting ([Packet](#), [Video](#), [Notes](#))
- 11/20 – BHC Data Workgroup
([Packet](#), [Data Update](#), [Video](#), [Padlet](#), [Notes](#))
- 12/05 – JeffCo EMS Council – [RHNDPP Pres](#)
- 12/08 – SBH-ASO Executive Board ([See pp 259-278](#))
- 12/21 – JeffCo Board of Health ([Video/Agenda](#))
- 01/04 – Monthly RCORP-I Grant Check-in ([Mtg Notes](#))
- 01/05 – SBH-ASO Advisory Board ([Packet](#))
- 01/08 – OCH Board Meeting ([Packet & Minutes](#))
- 01/09 – BHAC Meeting
- 01/10 – OCH Board Meeting ([Packet & Minutes](#))
- 01/17 – Clallam Resilience Explores JeffCo Needs
- 01/18 – JeffCo Board of Health ([Mtg Video/Agenda](#) and [OUD Response Notes](#))
- 01/23 – SCHR Meeting ([Notes](#))
- 01/24 – PT Library Staff & City Manager Naloxone Training
- 01/24 – BH Summit ([Crisis Response Graphic Draft Mtg Notes](#))
- 01/25 – Ground Pounders Meeting ([draft Notes](#))
- 01/29 – Community Conversations Planning ([Notes](#))
- 01/30 – Navigating Misinformation Webinar - ([Slides](#))
- 02/01 – Brinnon Seniors Group – Naloxone Training





Peer Support

JBS International, the group that provides Technical Assistance for the BHC's RCORP-Implementation grant through August 2024, provides a "Peer Hour" that occurs four times monthly. If you have peers working that would like to connect with other peers for support and camaraderie, please directly email Donald McDonald at JBS for the schedule:

DMcDonald@jbsinternational.com

Those reaching out should indicate they are connected to:

Jefferson County, WA

HRSA RCORP-Implementation 2 - Grant # GA1RH39564





NEXT BHC Meeting



Thursday, May 9th, 2024
@3:00p on Zoom





Acronym Sheet

BH – Behavioral Health

BHAC – Behavioral Health Advisory Committee

BHC – Behavioral Health Consortium

BoCC – Board of County Commissioners

CAP – Communication Action Plan

CARES – Community Assistance Referral & Education Service

DBH – Discovery Behavioral Health

DCR – Designated Crisis Responder

DUI – Driving Under the Influence

ED – Emergency Department

EJFR – East Jefferson Fire Rescue

EMS – Emergency Medical Services

JCPH – Jefferson County Public Health

JeffCo – Jefferson County

JHC – Jefferson Healthcare

JCSO – Jefferson County Sheriff's Office

HFPD – Health Facilities Planning & Development Consultants

HRSA – Health Resources and Services Administration

ITA – Involuntary Treatment Assessment

MAT – Medically Assisted Treatment

MH – Mental Health

MOUD – Medications for Opioid Use Disorder

NAMI – National Alliance of Mental Illness

OAC – Opioid Abatement Council (SBH-ASO)

OUD – Opioid Use Disorder

PTPD – Port Townsend Police Department

PWUD – People Who Use Drugs

RHNDP-P1 – Rural Health Network Development Program – Planning (HRSA Grant Awarded 2018-2019)

RCORP-P2 – Rural Community Opioid Response Program – Planning (HRSA Grant Awarded 2019-2020)

RCORP-I – Rural Community Opioid Response Program – Implementation (HRSA Grant Awarded 2020-2023 w/ 1 year No Cost Extension thru 8/2024)

R.E.A.L. – Recovery, Empowerment, Advocacy, Linkage

SBH-ASO – Salish Behavioral Health – Administrative Services Organization

SSP – Syringe Service Exchange

SUD – Substance Use Disorder

TBH – To Be Hired

VOA – Volunteers of America – Crisis Line (1-888-910-0416)

Vol - Voluntary

Invol – Involuntary

