

ATTENDEES

Laurie Tinker, JHC Rep to EMS Council; Molly Parker, Family Dr at Sheridan Clinic, JHC Medical Director for program, and CMO of population health; Kent Smith, ER Dr. and Decision Director @ JHC ED; Tim McKern, Quilcene Fire; Joe Nole, Andy Pernsteiner, Brett



Anglin, Steve Echol, JCSO; Susan O’Brien, JCPH/SBHC; Tom Olson, PTPD; Jolene Kron, SBH-ASO; Jim Novelli, Angel Alford, Dana Milagrosa, Brandon Torgler, DBH; Tammy Ridgway, EJFR; Gabbie Caudill, Believe In Recovery; David Carlbom, Convener and JeffCo EMS Medical Program Director; Lori J. Fleming, meeting coach.

Click for access to the [BH Summit Meeting Agenda](#) and the [Crisis Response Graphic](#).

UPDATES

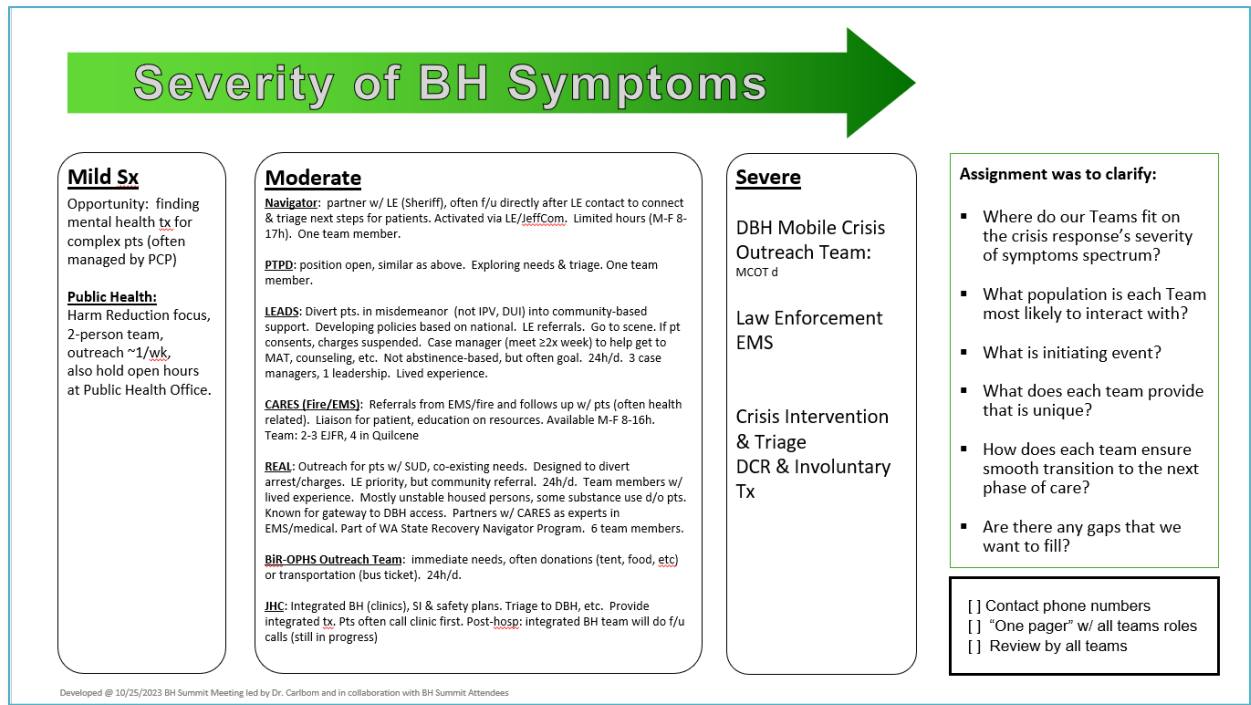
- EMS Council: Laurie Tinker, JHC Rep, has one 1 month left to her term.
- JSCO: 10/28/23 10-2 will host the Drug Take Back event at the Quilcene Fire Department, Hadlock and Port Townsend QFC locations.
- JSCO: As with the City, the July 2023 changes in legislation call for diversion on certain misdemeanor crimes, such as drug possession. Deputies work with LEAD team and prosecutor to divert potential arrests. ~12 cases referred since August – though none were for drug cases, all were for other crimes. Brett noted previous drug crimes interceptions were around traffic. Now cars cannot be legally impounded for a gross misdemeanor, hence two JSCO personnel would need to be on the side of the road trying to procure a search warrant, making it a difficult crime to enforce. Pre Blake the interception rate for drug possession was 100-150. Post Blake it went down to zero – akin to kicking the can down the road.
- Gateway to Freedom: Has initiated a Jefferson County LEAD Program with JSCO/Prosecutor/
- JCPH/SBHC – Provided Naloxone training for ~75 PT School District team members.
- Quilcene Fire Dept: Initiated South End CARE program with Gabbie/EJFR
- SBH-ASO: Have 10 Naloxone boxes that hold 50 doses and will be working to identify placement. Jolene Kron also shared data from Jefferson County’s REAL Team:

	April	May	June
Contacts	57	70	84
Case Management	20	61	51

Note: Referral response times to individual, whether by phone or at location, is at 88% for 30 minutes and under across our region.

MAPPING CRISIS RESPONSE RESOURCES IN JEFFERSON COUNTY,

The group mapped the range of JeffCo behavioral health response resources to where they fit on a spectrum of those serving mild-to-moderate-to-severe behavioral health symptoms. ([Click here](#) for larger view of graphic below.)



The group also gained a better understanding of where the hospital is aware of gaps in transitioning patients from in-hospital or emergency department care. This includes transition care calls for patients to get them back into clinic in 7-14 days. Currently JHC has been unable to get fully staffed and consequently haven't been able to fully manage that registry for a few years. On the Emergency Department side of things, where they are on the receiving end of patients in crisis it is challenging finding placement for patients.

The discussion turned to explore how the resources mapped could best support safe transitions from the hospital to home or the hospital to whatever the step is for those patients (It was noted we really need Mary Fortman from JHC in on this conversation.)

- Dana Milagrosa noted the DBH's REAL outreach team can go out into the community to meet people prior to crisis so they don't end up in the hospital. This can be done by going through the VOA # @ **888-910-0416** and requesting mobile crisis outreach, vs. asking for a DCR. Currently that is only available until 5p but will eventually be a 24/7 service.
- Kent Smith noted he'd like to have a small reference card/laminated sheet with all the organizations, how to contact them, when they are available, what they do, because it is

confusing at this time. Also noted there the cost is significant to transport people in areas like Quilcene and Brinnon. Gabbie responded the Believe in Recovery (BiR) / Olympic Peninsula Health Services (OPHS) Outreach Team can be called, as well as likely the REAL team can for an immediate one-time transport.

FOLLOW-UP FROM PRIOR BH SUMMIT MEETINGS

DBH/SBHC – Liaison approach for teen referrals

From Jan 2023 Mtg: SBHC/DBH will explore having DBH appoint a liaison who will operate as the point person for the SBHC to work with on teen referrals.

- Susan O'Brien noted the great news that DBH/SBHC have started a pilot plan that coordinates with students to get them connected more smoothly with mental health services for urgent/emergent issues. This new approach to coordination has served the first few students put through in this pilot approach.

JHC – next steps for quarterly care conference

From Sep 2022 Mtg: JHC working to create a system to have collective quarterly care conferences.

- In process: JHC's legal counsel working to complete an MOU for folks to sign as a foundation for her to facilitate quarterly care conference .

WEMESIS Data

From Jul 2023 Mtg: Working to get access to WEMESIS data through a data-sharing agreement.

- WEMESIS is still working to make county level data available through dashboards they are developing. David Carlbon navigating the difficulty of finalizing a data-sharing agreement because county numbers are small and there are data de-identification concerns.

NEXT STEPS SUMMARY

- Based on 10/25/2023 discussion, develop a reference card/page for Law Enforcement, EMS/hospital outlining relevant service offering and referral contact information for each resource available. (Not to be confused with the "Yellow Card" produced by JCPH.)
- Ask JCPH if the yellow card produced by CHIP can be reviewed/updated by players at the Summit table.
- Circle back with Mary Fortman for update on Quarterly Care Conference effort at next meeting. Chief McKern is interested in hearing results from JCPH re: Healthy Youth Survey conducted in throughout the JeffCo School Districts.

NEXT MEETING

- Next meeting date is set for Wednesday, January 24th, 2024 @ 3pm. Save the date evites have been sent.