



Olympic Community of Health Update

Presentation by OCH
Executive Director
Celeste Schoenthaler



Olympic Connect:
A unified network of partners that seamlessly connects people to the support they need to thrive.

Olympic 
COMMUNITY of HEALTH
CLALLAM | JEFFERSON | KITSAP

OCH brings together partners from diverse backgrounds, perspectives, and experiences...



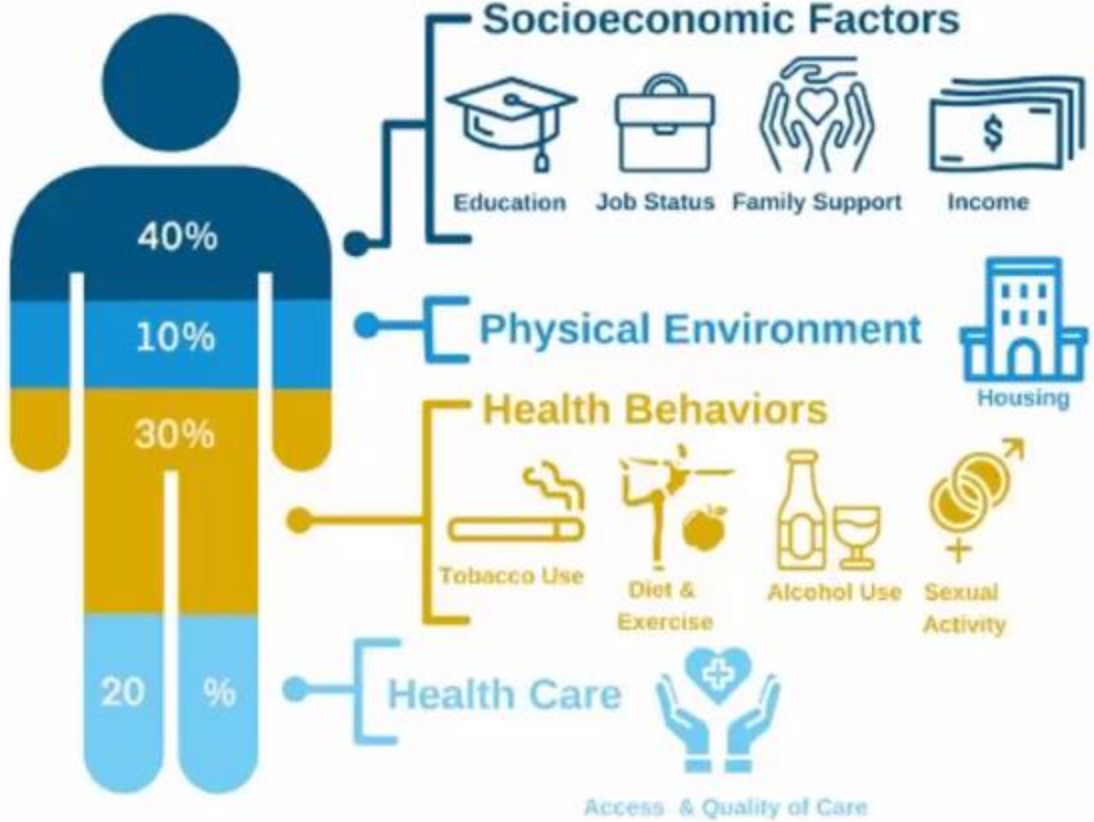
... to solve health issues through collaborative action



GOAL

“Improve individual and population health and advance **equity** by addressing the **determinants of health**”

Determinants of Health & Well-Being



Olympic Connect: A unified network of partners that seamlessly connects people to the support they need to thrive.

What is a Community Care Hub?

A community-centered entity that ...

- Supports a network of partners providing services and resources to address social needs
- Centralizes administrative functions and infrastructure
- Has relationships with and understands the capacities of local organizations and fosters cross-sector collaboration

OCH will serve as the CCH for the Olympic region, and we will call our CCH **Olympic Connect**



Olympic Connect: A unified network of partners that seamlessly connects people to the support they need to thrive.

Olympic
COMMUNITY of HEALTH



Olympic Connect: A unified network of partners that seamlessly connects people to the support they need to thrive.



Why a Community Care Hub?



Our communities can't thrive if people don't have what they need for optimal health and well-being.

Olympic Connect Will Bring:

- Funding
 - for case management for social needs
 - to expand & enhance social needs resources & services
 - to build capacity & provide training for CBWs
- Shared regional technology, including a regional resource directory
- Outreach, engagement, and communication
- Data, analytics, and reporting
- Continuous improvement

OCH funding opportunity to identify Community-Based Care Coordination partners to address social needs: <https://www.olympicch.org/funding>

Learn more about Olympic Connect:

Recent blog post with short overview video:

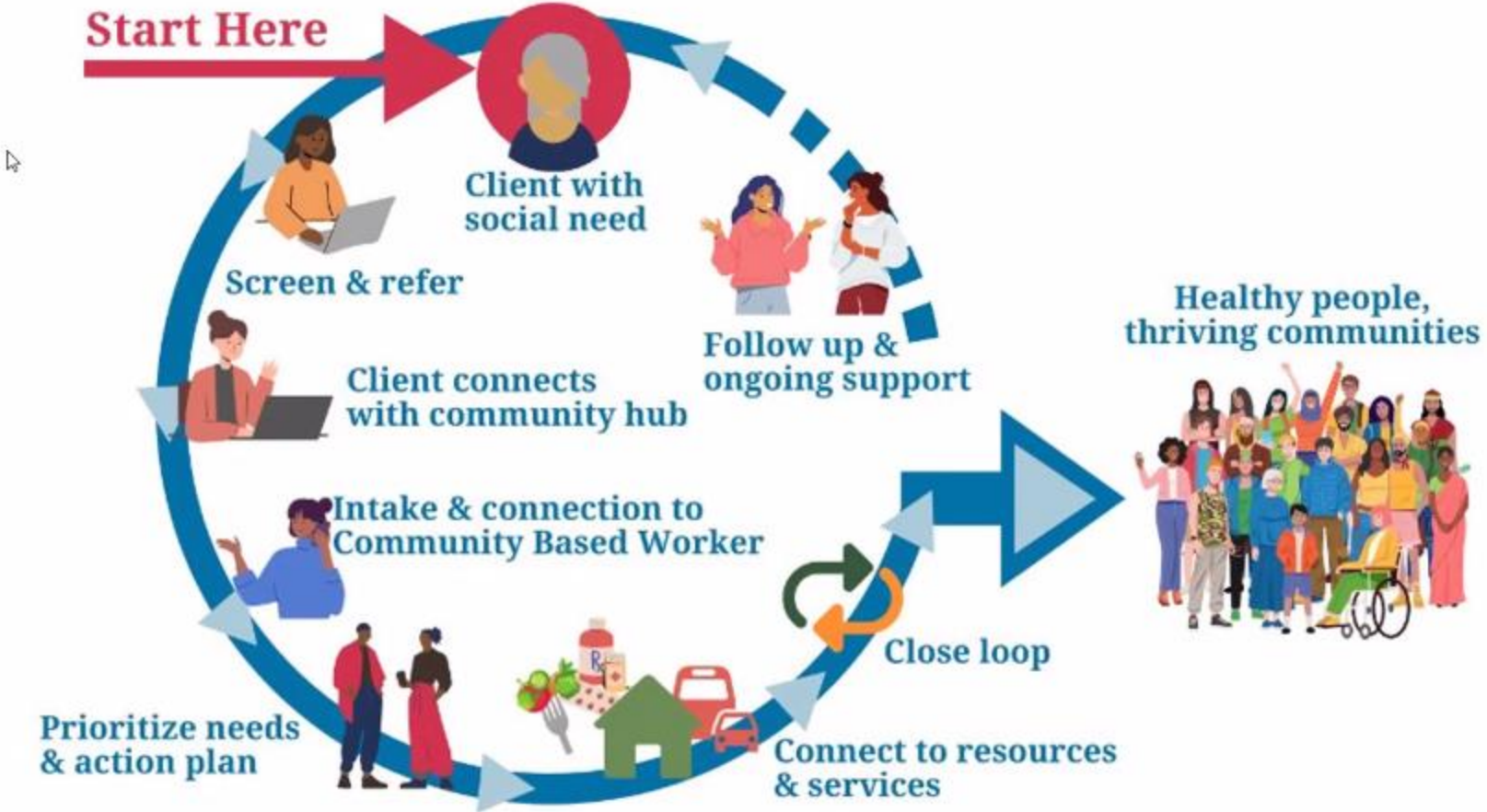
<https://www.olympicch.org/post/olympic-connect-olympic-region-community-care-hub>

Join us on August 27 from 9-10 am via zoom for **Olympic Connect Coffee Hour** to learn more.

<https://us02web.zoom.us/meeting/register/tZcrfuCprDwtG9aEiBYHjeRDTrI7B2DJDa3-#/registration>



Care Coordination for Social Needs



Olympic Connect: A unified network of partners that seamlessly connects people to the support they need to thrive.



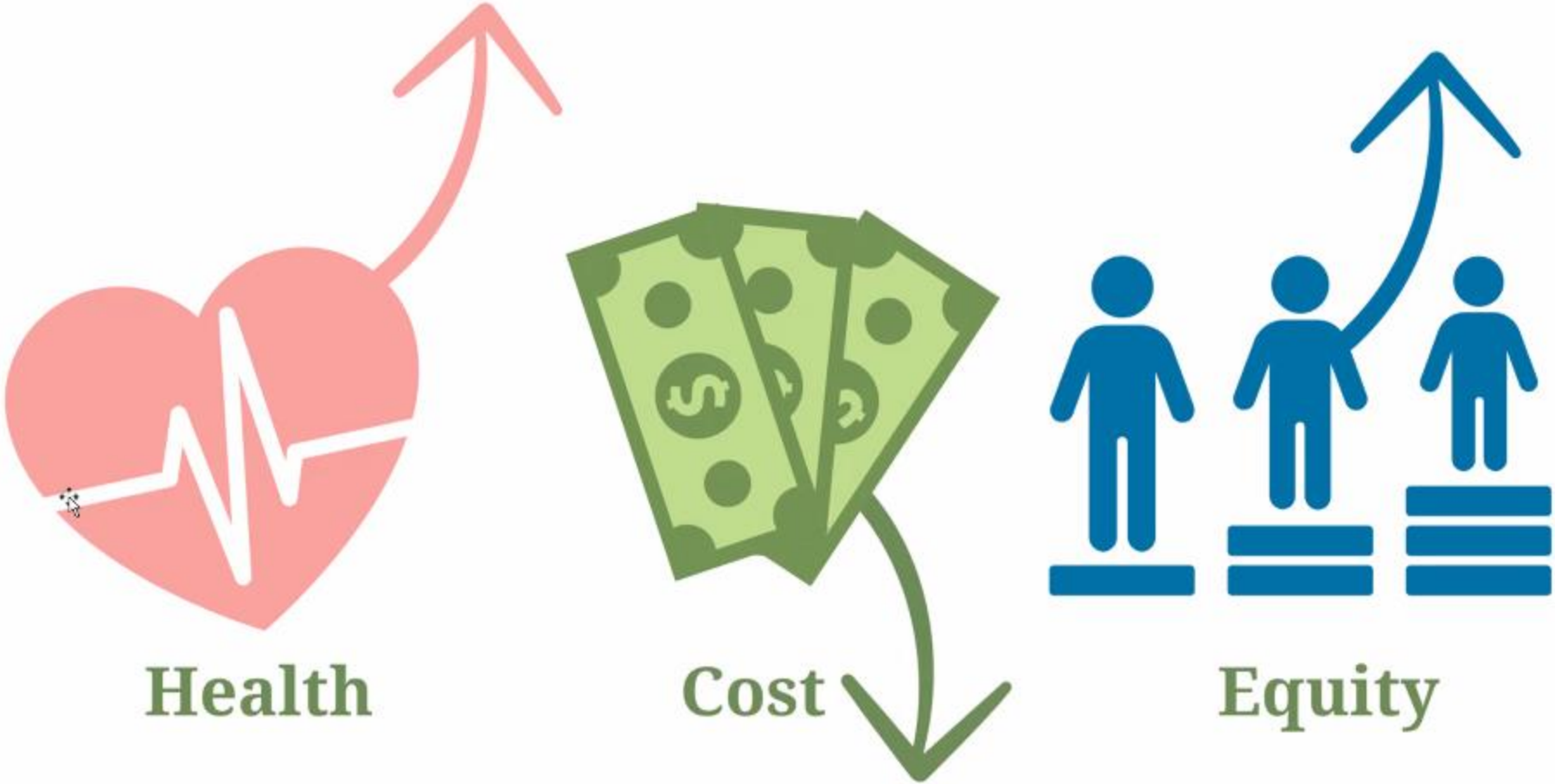
Olympic Connect: Potential value add

- Strengthens regional social service delivery
- Regional data
- Values partner expertise
- Shared learning
- Sustainable financing
- Elevates community voice
- Administrative support
- Reduce social admissions



Olympic Connect: A unified network of partners that seamlessly connects people to the support they need to thrive.

Potential value add



Olympic Connect: A unified network of partners that seamlessly connects people to the support they need to thrive.



What's next?



Get connected!

Visit our
website:
olympicch.org

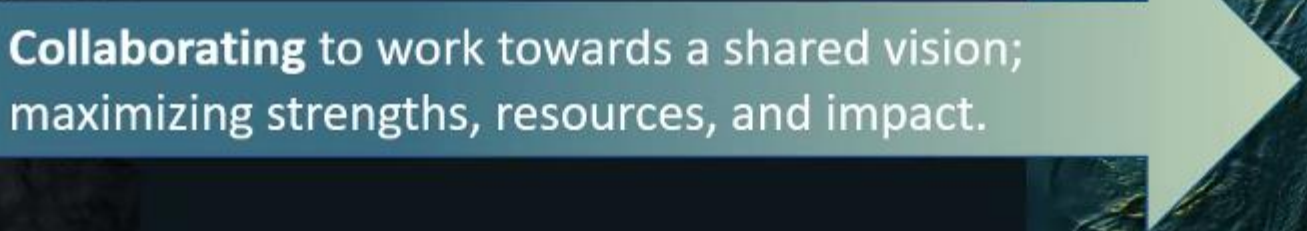
Sign up for
our
[newsletter](#)

Email
connect@olympicch.org



Stronger *Together*

Collaborating to work towards a shared vision;
maximizing strengths, resources, and impact.



Olympic Connect: A unified network of partners that seamlessly connects people to the support they need to thrive.

Olympic
COMMUNITY of HEALTH